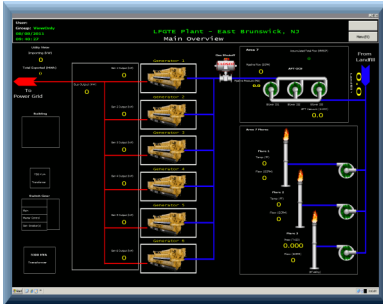


System Integration

Kupper Engineering, Inc.'s SCADA Systems (Supervisory Control and Data Acquisition) brings together all individual subsystems under one centralized system allowing greater control and advanced analytics of all data points.

SCADA (Supervisory Control and Data Acquisition)



RTUs (Remote Terminal Units)

RTUs are designed to transmit data from a remote location to a data management head-end system. Kupper Engineering provides standard and custom design/build utility, curtailment, metering, and SCADA RTUs. KEI has worked with all communication protocols including modbus, DNP, BACnet, DF1, to name a few. Kupper Engineering RTU's have the versatility to be configured to accept many variations of points list, protocols, and communications media to meet the project requirements. KEI is an approved vendor for PJM ARCOM Director RTU, First Energy SCADA RTU, and PPL SCADA RTU.

SCADA systems are the centralized systems that monitor and control entire sites or complex systems over large geographic areas. KEI's experience with large scale deployments of SCADA Systems, PLC's, RTU's and Human-Machine Interface (HMI) and the entire range of conditions and thresholds for all of these systems maximizes configurations to utilize your entire system. Additionally, the database from these components becomes a powerful tool in reporting, troubleshooting and investigating the root cause of problem areas.

PLC Control Systems

PLC control systems are designed to automate processes and communication of any industrial system. Kupper Engineering provides panel design & build, programming, Operator Interface Terminal (OIT)/(HMI), touchscreen, pushbutton, meters, PID control, and process transmitters. KEI works with all major PLC vendors including Allen Bradley, Automation Direct/Koyo, GE, Siemens, and Red Lion System.

Additional Capabilities

- ◆ Network design and setup
- ◆ Telephone and ISP design and coordination
- ◆ Custom panel design/build
- ◆ Power meter design/build
- ◆ SQL database management and reporting
- ◆ Website dashboards
- ◆ Service and maintenance
- ◆ Remote monitoring and data backup
- ◆ On-site start-up and troubleshooting
- ◆ System Security

Kupper Engineering is an authorized dealer for the following integration platform software.



**PJM
Arcom
Director
(Elesys)**

Kupper Engineering is classified as a small business and is registered to do business with the federal government under NAICS/SIC 541330.